



September 01, 2020 to September 30, 2020

11
Divisions

524
Closed
Service
Requests

584
Closed Work
Orders

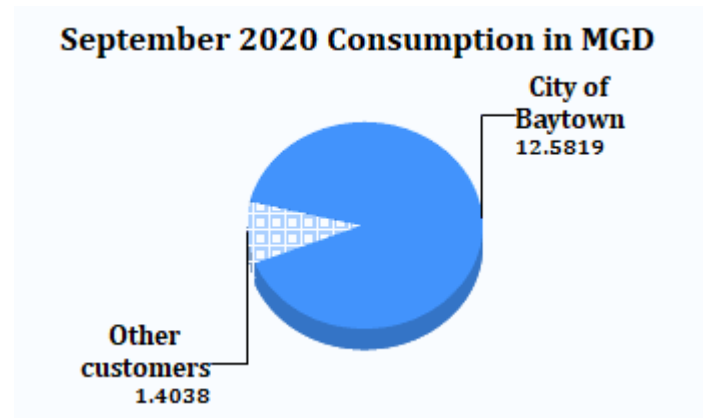
During this period, PWE responded to **524** citizen service requests and closed **584** work orders.

Public Works and Engineering accomplishments:

- *Pollution Control Division* completed **127** waste manifests, sampled **28** food establishments during the month of September 2020.

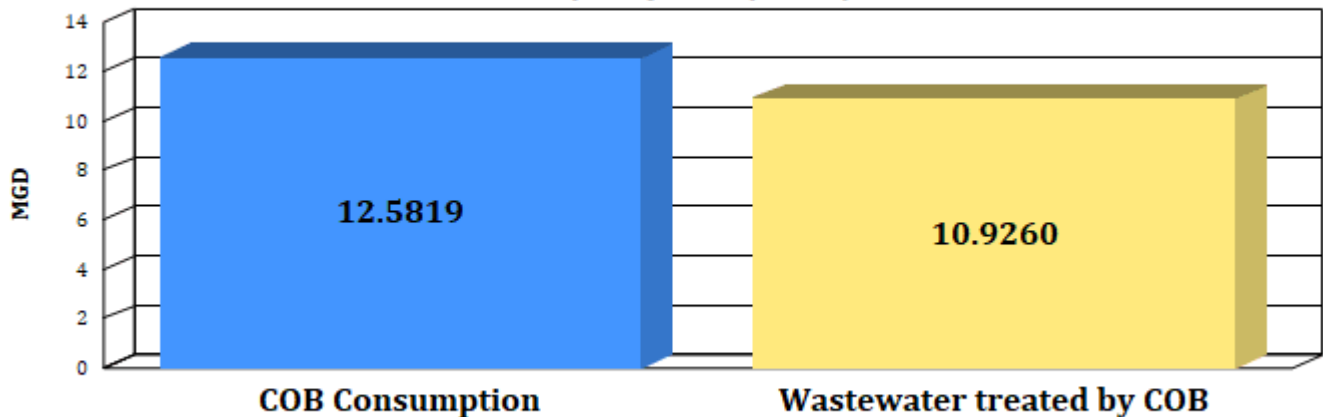
BAWA/ WWT Plants:

	<u>September 2019</u>	<u>September 2020</u>
COB consumption (in MGD)	12.8689	12.5819
Other customers consumption (in MGD)	1.5331	1.4038
Total BAWA (MGD's)	14.4020	13.9857
Wastewater treated	15.1845	10.9260



Water consumption vs Wastewater treated

Monthly Comparison (in MGD)



September 2020

City of Baytown

WASTEWATER TREATED BY DISTRICT:

Total Flow For September 2020

CENTRAL WWTP

Total Flow 95.2420 MG
 Monthly Average Flow per day: 3.1747 MGD
 Permitted Flow: 6.0000 MGD

EAST WWTP

Total Flow 69.9830 MG
 Monthly Average Flow per day: 2.3338 MGD
 Permitted Flow: 6.2000 MGD

WEST WWTP

Total Flow: 85.9380 MG
 Monthly Average Flow per day: 2.8646 MGD
 Permitted Flow: 8.0000 MGD

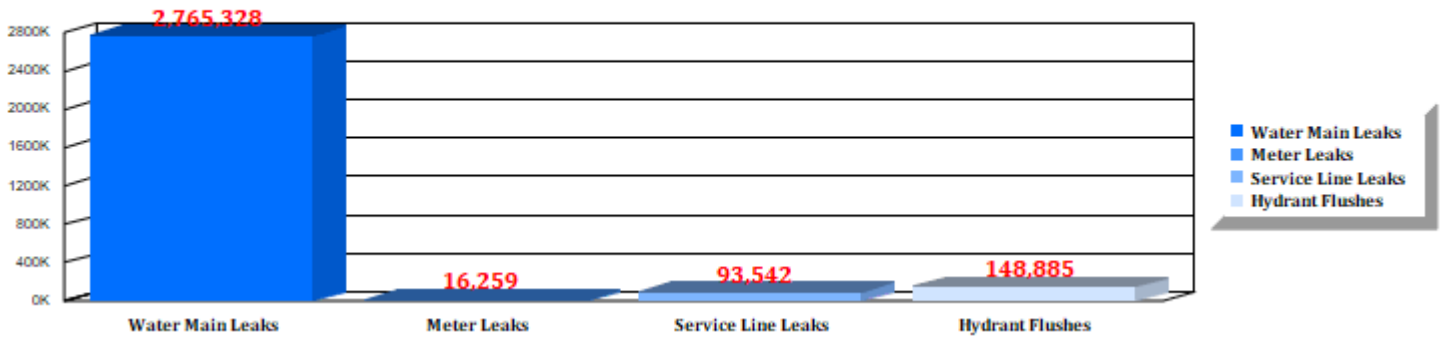
NORTHEAST WWTP

Total Flow : 76.5880 MG
 Monthly Average Flow per day: 2.5529 MGD
 Permitted Flow: 4.0000 MGD

WATER DISTRIBUTION /WASTEWATER COLLECTION:

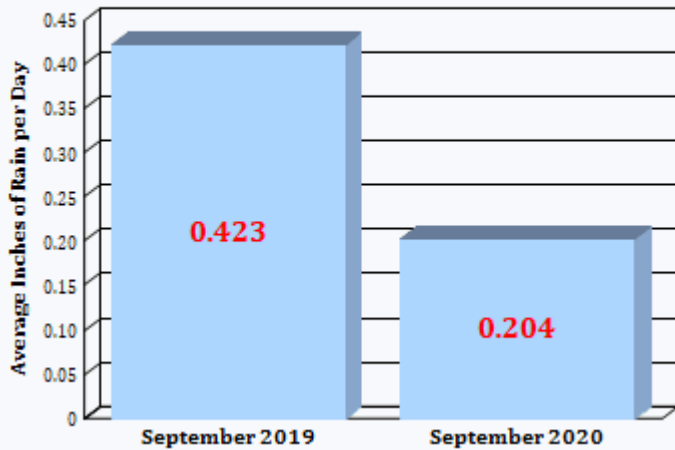
Unbilled Water Usage Distribution

in gallons



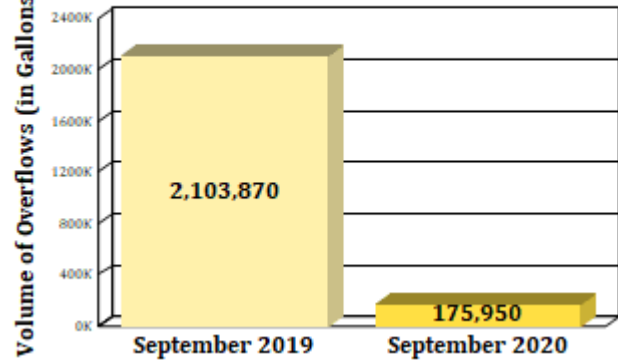
Average Daily Rain

in Inches



Sanitary Sewer Overflows

in Gallons



TRAFFIC:

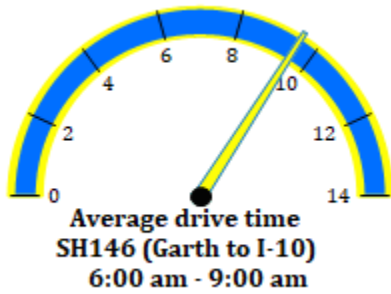
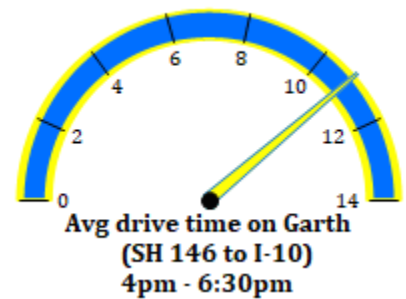
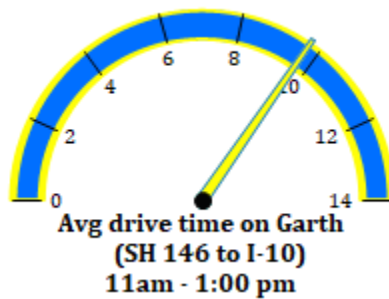
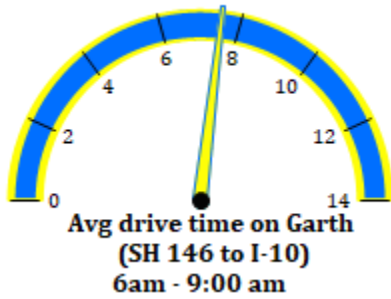
Traffic Infrastructure & Mobility:

**Ave. Drive Time:
(in Min)**

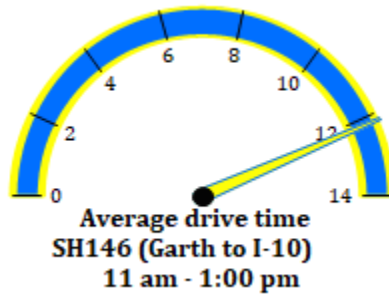
7.53

9.69

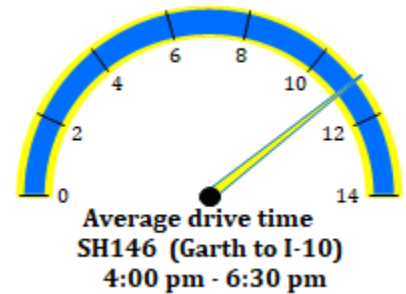
10.85



9.53



12.16



11.01

Traffic Signal Malfunctions attended:

POWER OUTAGE	2
PEDESTRIAN SIGNAL HEAD	2
LIGHTS IN FLASH	2

Fabrication of Traffic Signs:

NUMBER OF SIGNS FABRICATED 411

STREETS:

	Jun-19	Jul-19	Aug-19	Sep-19	Oct-19	Nov-19	Dec-19	Jan-20	Feb-20	Mar-20	Apr-20	May-20	Jun-20	Jul-20	Aug-20	Sep-20	
Curbs and Gutters	123	149	489	135	198	211	17	146	167	209	148	247	140	350	30	85	LF
Potholes fixed	154	116	166	87	229	84	6	121	303	49	6	9	20	67	0	64	ea.
Asphalt repairs / Micro /Seal	2,588	2,585	122,165	1,932	4,857	2,811	56	1,433	5,042	5,068	947,168	1,354	1,311	1,114	0	1,734	SF
Sidewalks (SQFT)	1,080	2,404	5,253	400	5,308	1,682	2,031	1,126	0	3,572	2,964	0	0	392	200	0	LF
Concrete Repairs	3,626	0	310	463	150	2,027	18	1,745	3,654	0	389	1,920	5,935	12,554	5,657	7,356	SF

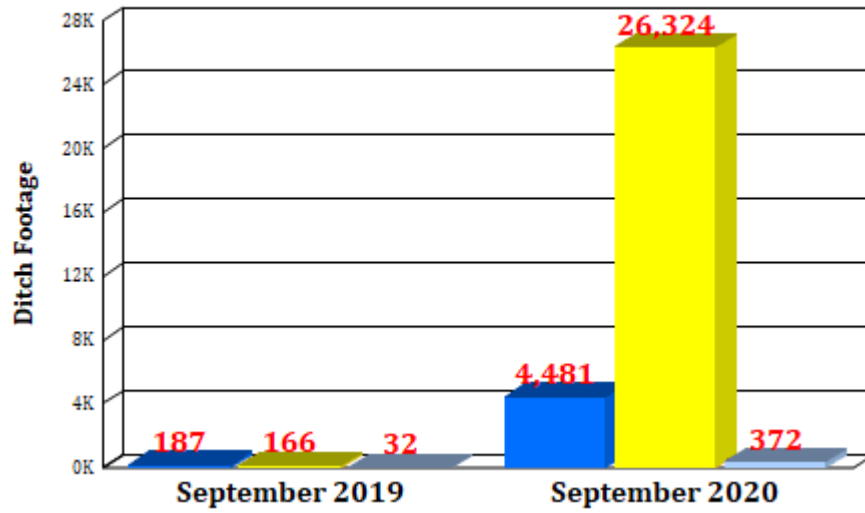
Microsurfacing Projects for FY2018-2019 (May 2019) and FY2019-2020 (April 2020). These projects were made with the collaboration of contractors.

DRAINAGE:

Storm water system maintenance:

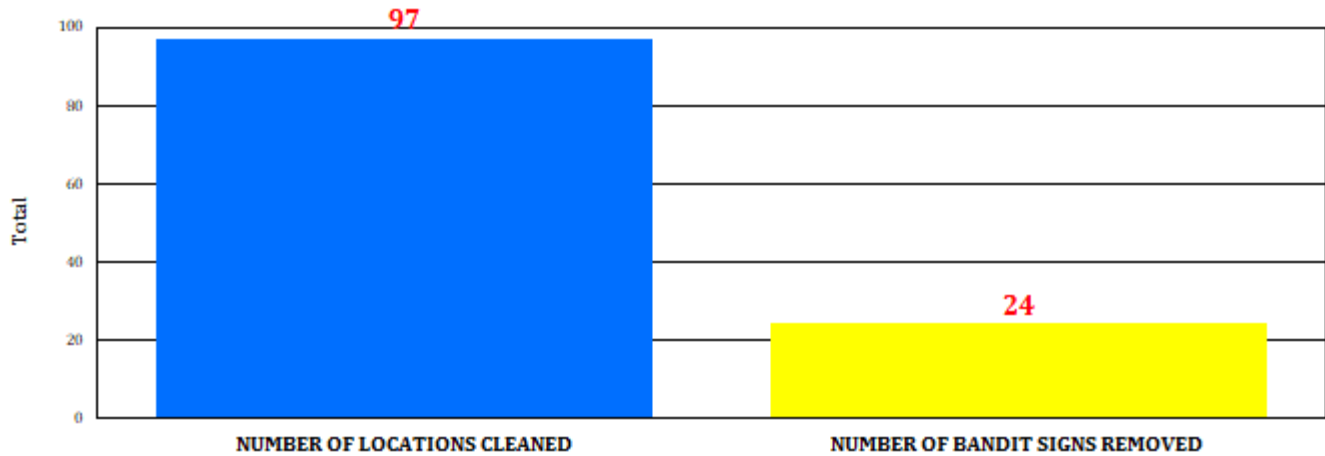
	<u>Sept 2019</u>	<u>Sept 2020</u>
NUMBER OF INLETS	32	372
LF PIPE FLUSH	166	26,324
DRAINAGE DITCH FOOTAGE	187	4,481

Ditch Maintenance



SOLID WASTE:

Clean Team Efforts



<u>Green Center Customers:</u>	Sep-2020
Debris	581
Brush	203
E- Waste Customers	67
Recycle	355
Tires Customers	63
Textile	34
No Water Bill Customers	5
Non Residents	6
Total	1,314

<u>Received Items:</u>	Sep-2020
30 Yards Debris Bins	19
40 Yards Debris Bins	45
E- Waste Items	172
20 Yards Recycle Bins	4
30 Yards Recycle Bins	2
40 Yards Recycle Bins	1
Lbs of Metal	11,860
Lbs. of Aluminum Cans	0
Tires	167
Total	12,270

Engineering:

Engineering Cases

In Queue less than 14 Days In Queue between 14 to 30 Days In Queue for more than 30 Days

Building Permits	8	4	0
Engineering Reports	5	4	1
Right of Way	3	7	0
Total	16	15	1

This report includes data worked by the PW divisions and collected in Cityworks, SCADA, Excel and Crystal Reports.
Revised by: Lianette Leon, Asset Manager

Approved by: Frank O. Simoneaux, Jr., P.E., Director of Public Work & Engineering Department of the City of Baytown

10/14/2020